



Serie 62000

ACCESSORI IN ACCIAIO INOX AISI 316 L STAINLESS STEEL ACCESSORIES

SERIE 62000

Caratteristiche Tecniche Accessori / Accessories Technical Characteristics

Pressioni / Pressures

Pressione minima / Minimum pressure: **-0.99 bar (-0.099 MPa)**

Pressione massima / Maximum pressure: **140 bar (14 MPa)**

Queste Pressioni valgono per gli accessori senza o-ring;
Per gli accessori con o-ring consultare i valori di pressione
direttamente sulla tabella dell'articolo.

These pressures apply to the equipment without o-ring;
For accessories with o-ring see pressure values directly from
the table the article.

Temperature / Temperatures

Temperatura minima / Minimum temperature: **-110 °C**

Temperatura massima / Maximum temperature: **+300 °C**

Queste temperature valgono per gli accessori senza o-ring;
Per gli accessori con o-ring consultare i valori di temperatura
direttamente sulla tabella dell'articolo.

These temperatures apply to the equipment without o-ring;
For accessories with o-ring see temperature values directly
from the table the article.

Filettature / Threads

Gas conica conforme ISO 7.1, BS 21, DIN 2999 / Tapered gas in conformity with ISO 7.1, BS 21, DIN 2999.

Gas cilindrica conforme ISO 228 Classe A / Parallel gas in conformity with ISO 228 Class A.

Metrica conforme ISO R/262 / Metric in conformity with ISO R/262.

Tubi di collegamento / Connection Tubes

Tubi e raccorderia in genere

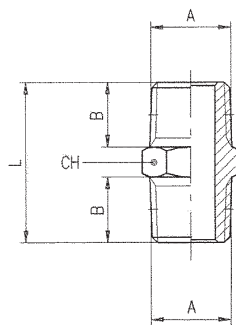
Tube and fittings in general.

Fluidi / Fluids

Fluidi per Industria alimentare e chimica compatibili con i
componenti del raccordo / Fluid for alimentar and chemical
industry compatible with fitting components.

62000

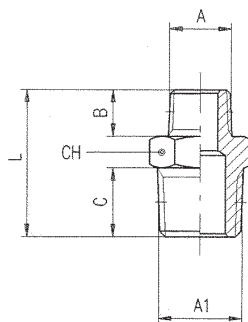
NIPPLIO CONICO - NIPPLE (TAPER)



Codice Code	A	B	L	CH	Conf. Pack.
620000440200	1/8	7.5	19.5	11	10
620000440300	1/4	11	27	14	10
620000440400	3/8	11.5	28	17	10
620000440500	1/2	14	33.5	22	10
620000440700	3/4	16.5	40	27	10

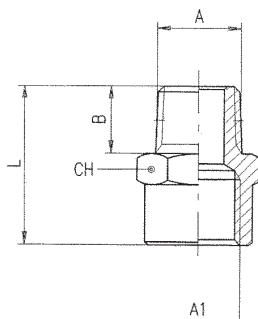
62020

NIPPLIO DI RIDUZIONE CONICO - REDUCING NIPPLE (TAPER)



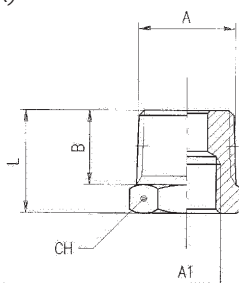
Codice Code	A	A1	B	C	L	CH	Conf. Pack.
620200044AT00	1/8	1/4	7.5	11	23.5	14	10
6202000443W00	1/8	3/8	7.5	11.5	24	17	10
6202000447W00	1/4	3/8	11	11.5	27.5	17	10
6202000448W00	1/4	1/2	11	14	30.5	22	10
620200044AC00	3/8	1/2	11.5	14	31	22	10
620200044AH00	1/2	3/4	14	16.5	37.5	27	10

62040

RIDUZIONE CONICA - REDUCER (TAPER)


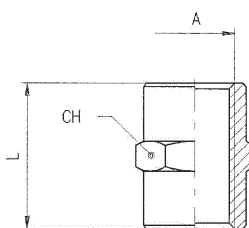
Codice Code	A	A1	B	L	CH	Conf. Pack.
620400044AT00	1/8	1/4	7.5	22	17	10
6204000447W00	1/4	3/8	11	27	22	10
6204000448W00	1/4	1/2	11	30	24	10
620400044AC00	3/8	1/2	11.5	30.5	24	10
620400044AH00	1/2	3/4	14	35	32	10

62080

RIDUZIONE CONICA - REDUCER (TAPER)


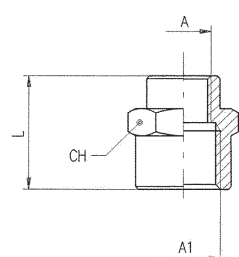
Codice Code	A	A1	B	L	CH	Conf. Pack.
6208000445W00	1/4	1/8	11	16	14	10
6208000449W00	3/8	1/8	11.5	16.5	17	10
620800044AA00	3/8	1/4	11.5	16.5	17	10
620800044AE00	1/2	1/4	14	19.5	22	10
620800044AF00	1/2	3/8	14	19.5	22	10
620800044AM00	3/4	1/2	16.5	23.5	27	10

62300

MANICOTTO - SLEEVE


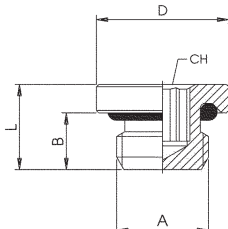
Codice Code	A	L	CH	Conf. Pack.
6230000440200	1/8	15	14	10
6230000440300	1/4	22	17	10
6230000440400	3/8	24	22	10
6230000440500	1/2	30	27	10
6230000440700	3/4	32	32	10

62310

MANICOTTO DI RIDUZIONE - REDUCING SLEEVE


Codice Code	A	A1	L	CH	Conf. Pack.
623100044AT00	1/8	1/4	19	17	10
6231000447W00	1/4	3/8	23	22	10
623100044AC00	3/8	1/2	27.5	24	10
623100044AH00	1/2	3/4	30	30	10

62315

TAPPO MASCHIO CILINDRICO ESAGONO INCASSATO - MALE PLUG (PARALLEL) WITH EXAGON EMBEDDED


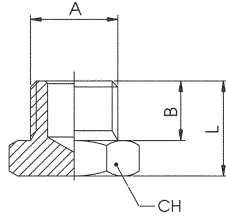
Codice Code	A	B	L	D	CH	Conf. Pack.
6231500001	1/8	6	8.5	14	5	10
6231500002	1/4	8	11	18	6	10
6231500003	3/8	9	12.5	20	8	10
6231500004	1/2	10	13.5	25	10	10

Temperatura minima / Minimum temperature: -15 °C
 Temperatura massima / Maximum temperature: +225 °C

Pressione minima / Minimum pressure: -0.99 bar (-0.099 MPa)
 Pressione massima / Maximum pressure: +15 bar (1.5 MPa)

62320

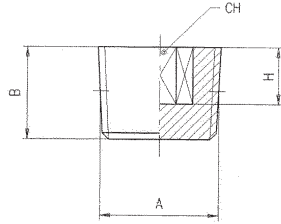
TAPPO MASCHIO CILINDRICO - MALE PLUG (PARALLEL)



Codice Code	A	B	L	CH	Conf. Pack.
6232000440200	1/8	6.5	10	14	10
6232000440300	1/4	9	13	17	10
6232000440400	3/8	9.5	13.5	19	10
6232000440500	1/2	10	14.5	24	10
6232000440700	3/4	11	16	30	10

62325

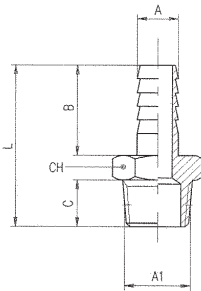
TAPPO MASCHIO CONICO DIN 906 - MALE PLUG (TAPER) DIN 906



Codice Code	A	B	H	CH	Conf. Pack.
6232500440200	1/8	7.5	5	5	10
6232500440300	1/4	10	7	6	10
6232500440400	3/8	11	7	8	10
6232500440500	1/2	13	8	10	10

62340

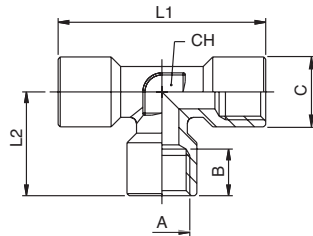
PORTAGOMMA MASCHIO CONICO - MALE HOSE ADAPTER (TAPER)



Codice Code	A	A1	B	C	L	CH	Conf. Pack.
623400044BS00	6	1/8	19.5	7.5	32	11	10
623400044BZ00	7	1/8	19.5	7.5	32	11	10
623400044BX00	7	1/4	19.5	11	35.5	14	10
623400044BJ00	8	1/4	19.5	11	35.5	14	10
623400044CB00	9	1/4	19.5	11	35.5	14	10
623400044CC00	9	3/8	19.5	11.5	36	17	10
623400044CF00	10	1/4	19.5	11	35.5	14	10
623400044CG00	10	3/8	19.5	11.5	36	17	10
623400044CH00	10	1/2	19.5	14	39	22	10
623400044CI00	12	1/4	19.5	11	35.5	14	10
623400044CL00	12	3/8	19.5	11.5	36	17	10
623400044CM00	12	1/2	19.5	14	39	22	10
623400044CN00	14	3/8	19.5	11.5	36	17	10
623400044DB00	14	1/2	19.5	14	39	22	10
623400044CR00	16	1/2	19.5	14	39	22	10
623400044CZ00	18	1/2	19.5	14	39	22	10
623400044CX00	18	3/4	19.5	16.5	43.5	27	10
623400044CJ00	20	1/2	19.5	14	39	22	10
623400044DH00	20	3/4	19.5	13.5	40	27	10

62400

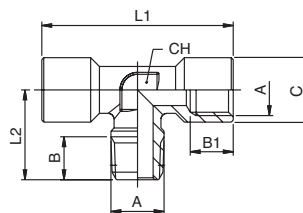
RACCORDO A T FEMMINA - FEMALE TEE



Codice Code	A	B	C	L1	L2	CH	Conf. Pack.
6240000440200	1/8	8.5	18.5	37	18.5	12	10
6240000440300	1/4	11	24.5	49	24.5	12	10
6240000440400	3/8	12	27	54	27	15	10
6240000440500	1/2	15	32	64	32	20	10

62440

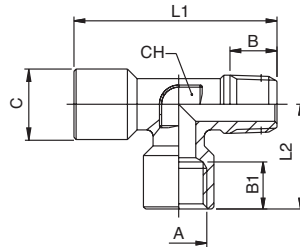
RACCORDO A T MASCHIO CENTRALE - CENTRE LEG MALE TEE



Codice Code	A	B	B1	C	L1	L2	CH	Conf. Pack.
6244000440200	1/8	7.5	8.5	17.5	37	17.5	12	10
6244000440300	1/4	11	11	23	49	23	12	10
6244000440400	3/8	11.5	12	25.5	54	25.5	15	10
6244000440500	1/2	14	15	29.5	64	29.5	20	10

62450

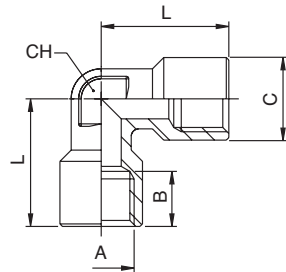
RACCORDO A T MASCHIO LATERALE - OFF SET MALE TEE



Codice Code	A	B	B1	C	L1	L2	CH	Conf. Pack.
6245000440200	1/8	7.5	8.5	18.5	36	18.5	12	10
6245000440300	1/4	11	11	24.5	47.5	24.5	12	10
6245000440400	3/8	11.5	12	27	52.5	27	15	10
6245000440500	1/2	14	15	32	61.5	32	20	10

62510

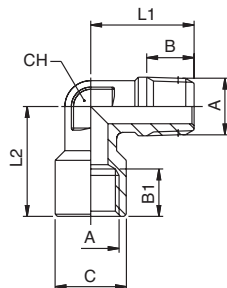
RACCORDO A L FEMMINA - FEMALE ELBOW



Codice Code	A	C	B	L	CH	Conf. Pack.
6251000440200	1/8	13	8.5	21	10	10
6251000440300	1/4	16.5	11	25.5	12	10
6251000440400	3/8	20.5	12	28	15	10
6251000440500	1/2	25.5	15	32	20	10

62520

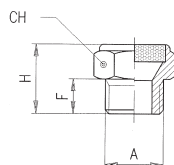
RACCORDO A L MASCHIO FEMMINA - MALE FEMALE ELBOW



Codice Code	A	B	B1	C	L1	L2	CH	Conf. Pack.
6252000440200	1/8	7.5	8.5	21	18	21	10	10
6252000440300	1/4	11	11	25.5	24	25.5	12	10
6252000440400	3/8	11.5	12	28	27	28	15	10
6252000440500	1/2	14	15	32	29.5	32	20	10

62540

SILENZIATORE - SILENCER



dB = Abbattimento acustico (dB) a 6 bar
Acoustic fading (dB) at 6 bar

CARATTERISTICHE TECNICHE / TECHNICAL CHARACTERISTICS

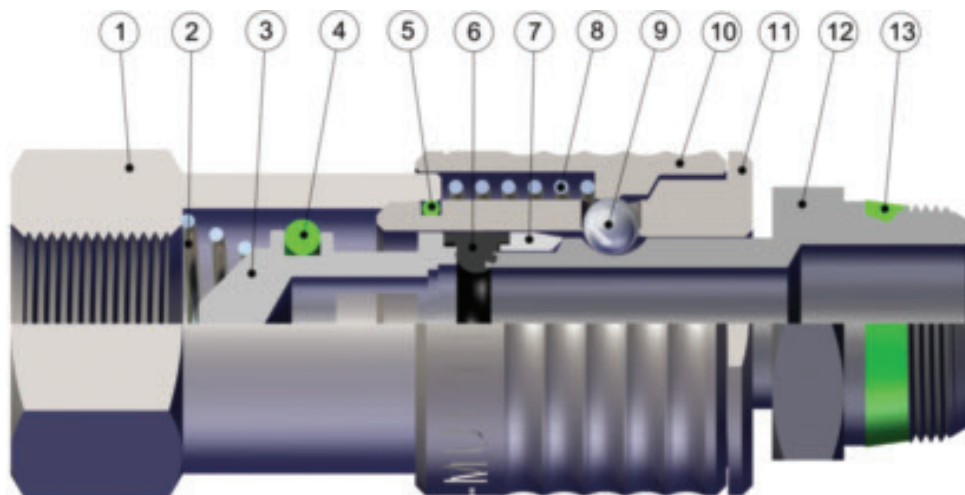
Pressione massima / maximum pressure:	10 bar
Temperatura minima / minimum temperature:	-20°C
Temperatura massima / maximum temperature:	+300°C
Soglia di filtrazione / filtration threshold:	76 µm

Codice Code	A	F	H	CH	dB	Conf. Pack.
6254000001	1/8	8	15	14	30.6	10
6254000002	1/4	8	15	17	33	10
6254000003	3/8	10	18	22	35	10
6254000004	1/2	12	22	27	23	10

MULTIPRESA IN ACCIAIO INOX AISI 316 L STAINLESS STEEL MULTISOCKET

SERIE 63000

Caratteristiche Tecniche / Technical Characteristics



Materiali e Componenti / Component Parts and Materials

- | | |
|---|--|
| 1 Attacco terminale in acciaio INOX AISI 316L | 1 AISI 316L Steel coupling back part |
| 2 Molla otturatore in acciaio INOX AISI 302 | 2 AISI 302 Steel shutter thrust spring |
| 3 Otturatore in acciaio INOX AISI 316L | 3 AISI 316L Steel shutter |
| 4 Guarnizione O-Ring Otturatore in FKM alimentare | 4 Food FKM shutter O-Ring seal |
| 5 Guarnizione O-Ring corpo in FKM alimentare | 5 Food FKM body O-Ring seal |
| 6 Guarnizione innesto in FKM alimentare | 6 Food FKM plug seal |
| 7 Anello guida innesto in acciaio INOX AISI 316L | 7 AISI 316L Steel guide ring coupling |
| 8 Molla ghiera in acciaio INOX AISI 302 | 8 AISI 302 Steel ring nut spring |
| 9 Sfera in acciaio INOX AISI 420 | 9 AISI 420 Steel ball |
| 10 Ghiera in acciaio INOX AISI 316L | 10 AISI 316L Steel sleeve |
| 11 Corpo in acciaio INOX AISI 316L | 11 AISI 316L Steel body |
| 12 Innesto in acciaio INOX AISI 316L | 12 AISI 316L Steel plug outline |
| 13 Guarnizione filetto in FKM alimentare | 13 Food FKM thread packing |

Pressioni / Pressures

Pressione minima / Minimum pressure: **0 bar** (0 MPa)
Pressione massima / Maximum pressure: **16 bar** (1.6 MPa)

Temperature / Temperatures

Temperatura minima / Minimum temperature: **-15 °C**
Temperatura massima / Maximum temperature: **+200 °C**

Filettature / Threads

Gas cilindrica conforme ISO 228 Classe A / Parallel gas in conformity with ISO 228 Class A.
Gas conica "short" / "Short" tapered thread.

Fluidi compatibili / Fluids

Aria compressa.
Fluidi per Industria alimentare e chimica compatibili con i componenti.
Compressed air.
Fluid for food and chemical industry compatible with all components.